



Colonnade Insurance S.A.

Group Solvency & Financial Condition Report

Year ended 31 December 2021

Contents

Summary	3
A. Business and Performance	4
A.1 Business.....	4
A.2 Underwriting Performance.....	5
A.3 Investment Performance.....	6
A.4 Performance of other activities.....	7
A.5 Other information.....	7
B. System of Governance	9
B.1 General information on the system of governance.....	9
B.2 Fit and proper requirements.....	11
B.3 Risk management system including the own risk and solvency assessment.....	12
B.4 Internal control system.....	15
B.5 Compliance.....	16
B.6 Internal audit function.....	16
B.7 Actuarial function.....	16
B.8 Outsourcing.....	17
B.9 Other information.....	17
C. Risk profile	18
C.1 Insurance risk.....	18
C.2 Market risk.....	18
C.3 Credit risk.....	19
C.4 Liquidity risk.....	20
C.5 Operational risk.....	20
C.6 Other Material Risks and Stress and Scenario testing.....	20
C.7 Other information.....	20
D. Valuation for solvency purposes	21
D.1 Assets.....	22
D.2 Technical provisions.....	23
D.3 Other liabilities.....	26
D.4 Alternative methods for valuation.....	26
D.5 Other information.....	26
E. Capital management	27
E.1 Own funds.....	27
E.2 Solvency capital requirement and Minimum capital requirement.....	29
E.3 Use of the duration-based equity sub-module in the calculation of the Solvency capital requirement.....	30
E.4 Difference between the standard formula and any internal model used.....	30
E.5 Non-compliance with the Minimum Capital requirement with the Solvency Capital requirement.....	30

Summary

Purpose of report

This document is the Group Solvency & Financial Condition Report (“SFCR”) for Colonnade Insurance S.A. for the period ending 31 December 2021, as per the Solvency II regulations. The group comprises Colonnade Insurance S.A. (“the Company”) and its subsidiary, TIG (Bermuda) Ltd. (“TIG Bermuda” and together “the Group”).

A. Business and Performance

As TIG Bermuda has not written any (re)insurance business for many years, this section summarises how the Company operates and how it has performed during the year ended 31 December 2021. The Company’s financial year runs to 31 December and it reports its results in Euros.

B. System of Governance

Given the nature of TIG Bermuda (as described in section A.1), the system of governance described relates to that in place within the Company. The Company maintains a strong framework for the control and management of the business. This section describes the key committees and functions which serve to provide sound and prudent management of our operations.

C. Risk profile

This section provides information regarding our risk management processes, for each of the principal risks faced by the Company.

D. Valuation for solvency purposes

The Solvency II regulations require the Group to value assets and liabilities on a different basis to that used in the Company’s financial statements when assessing its solvency requirements. This section describes the main methods and assumptions used in the valuation.

E. Capital management

The Group holds capital in excess of its regulatory requirements, to maintain its ability to pay its policyholders even if extreme events materialise. In order to assess its regulatory Solvency Capital Requirement, the Group uses the standard formula specified in the Solvency II legislation. This section summarises the assets held to meet the regulatory Solvency Capital requirement.

A. Business and Performance

A.1 Business

i. Business profile

Colonnade Insurance S.A. (“Colonnade” or “the Company”) is a Luxembourg insurer which is authorised to write all classes of non-life insurance business with the exception of class 10a (motor vehicle liability). Colonnade underwrites consumer and commercial business lines through branches established in Hungary, Czech Republic, Slovakia, Bulgaria, Poland and Romania.

The Company’s shareholder is **Fairfax Luxembourg Holdings S.à r.l.**, a company registered in Luxembourg.

The Company’s ultimate parent is **Fairfax Financial Holdings Limited (“Fairfax”)**, a major Canadian holding company whose common shares are listed on the Toronto Stock Exchange, and whose address is 95 Wellington Street West, Suite 800, Toronto, Ontario M5J 2N7, Canada. Further details regarding Fairfax are set out within the section entitled “About Fairfax” below.

TIG (Bermuda) Ltd. (“TIG Bermuda”) is an insurance company authorised in Bermuda which has not written any new or renewing insurance business for at least the last 10 years. At 31 December 2020, its net assets comprise a cash / investment portfolio of approximately EUR 1 million (with accruals of an immaterial value and nil technical liabilities). The Company’s 100% ownership share of TIG Bermuda represents its only direct or indirect participating interest.

ii. Significant business events during 2021

COVID-19

In 2021 Colonnade continued operating in a “work from home” regime mixed with office presence, depending on the actual pandemic situation, to ensure staff safety along with meeting the restrictions implemented by the governments in our countries. Colonnade’s teams kept demonstrating full dedication and commitment which is also a factor in the achieved good results.

The Company saw similar trends in the business volume in certain lines as in 2020:

- Premium volumes were reduced in travel insurance and GAP compared to the pre-COVID-19 years, due to less international travel and a significant slow-down of car production. The latter trend is also influenced by supply chain crisis (e.g. lack of electronic chips produced) globally.

Other than the lines above Colonnade has experienced the portfolio behaving similarly to the pre-COVID-19 years, hence the Company believes that COVID-19 has no further impact on our business.

Transformation Project

In September 2020, the Company commenced the Colonnade Transformation program, Project Phoenix. The goal of the program is to transform Colonnade to a modern insurance company that addresses the customer needs in our rapidly changing environment. The project has technology and operating model components. On the technology part, the scope is to implement a new insurance software platform by the end of 2021.

At the end of September 2021, the Company had completed the roll-out of the first release of the program that focuses on Consumer Claims to all of its countries. In early 2022 further rollout of the technology will cover Commercial Claims and the entire underwriting business cycle in at least one product.

During 2021 Colonnade has acquired all the capabilities to implement new products, without any external help, that will enable to move the entire business on the new platform in time.

iii. Capital and solvency cover

Colonnade's SCR (standard formula) cover ratio stood at 161% at 31 December 2021 with the SCR being €76.3m.

iv. About Fairfax

Fairfax, through its subsidiaries, has an international insurance and reinsurance business which has a global underwriting reach with longstanding relationships and a broad product range. At each of its subsidiaries there is an experienced management team focused on underwriting discipline and prudent reserving. Management at these companies are committed to Fairfax's goals of underwriting profitability.

Fairfax (<http://www.fairfax.ca/>) is described in summary detail below:

- Significant player in the P&C industry with US\$23.8 billion in gross premium and US\$15.1 billion in total Shareholders' equity (as at 31 December 2021).
- Strong long-term relationships developed over 36 years and multiple cycles.
- Global territorial reach in both insurance and reinsurance.
- Fairfax culture is well known and respected within the industry.

v. Summary Financial Performance

The Group's summary income statement for the years ended 31 December 2021 and 2020 is set out below:

Income Statement (EUR'000)	2021	2020
Gross Written Premium	169,530	152,931
Net Earned Premium	131,695	126,156
Claims Incurred	-54,097	-46,333
Net operating expenses	-72,070	-67,900
Other technical income	257	428
Allocated investment return	972	946
Underwriting result	6,757	13,297
Other income and charges	886	-4,146
Profit before tax	7,643	9,151
Taxes	-3,023	-1,542
Profit for the financial period	4,620	7,608

Colonnade recorded an underwriting profit of EUR 6.8 million in 2021 (combined ratio of 95%) and an overall profit after tax of EUR 4.6 million.

A.2 Underwriting Performance

Colonnade currently underwrites business through six branches established across the CEE region; Bulgaria, the Czech Republic, Hungary, Poland, Romania and Slovakia.

During 2021, Colonnade wrote total gross premiums of EUR 170 million, as tabulated below:

Gross Written Premiums (EUR '000s)	Bulgaria	Czech republic	Hungary	Poland	Romania	Slovakia	Grand Total
Credit and Suretyship Insurance	-	-	298	10	-	-	308
Fire and Other Damage to Property Insurance	2,688	9,195	9,696	16,602	6,776	10,162	55,119
General Liability Insurance	3,365	13,144	13,931	19,786	3,264	6,302	59,791
Income Protection Insurance	191	11,246	7,995	7,924	272	444	28,072
Marine, Aviation and Transport Insurance	452	3,097	327	390	88	105	4,458
Medical expense insurance	273	1,383	4,520	3,215	531	114	10,036
Miscellaneous Financial Loss	58	944	(0)	123	1	31	1,158
Motor Vehicle Liability Insurance	-	520	-	464	-	-	984
Non Proportional Casualty Reinsurance	-	-	165	-	-	-	165
Non Proportional Property Reinsurance	-	-	674	-	-	-	674
Other Motor Insurance	42	3,688	1,543	-	-	3,495	8,767
Grand Total	7,068	43,215	39,148	48,514	10,932	20,653	169,530

A comparison to 2020 is below (positive numbers reflect an increase in premium).

Gross Written Premiums (EUR '000s)	Bulgaria	Czech republic	Hungary	Poland	Romania	Slovakia	Grand Total
Credit and Suretyship Insurance	-	-	(155)	10	-	-	(145)
Fire and Other Damage to Property Insurance	515	373	2,815	1,725	(10)	833	6,252
General Liability Insurance	405	2,354	1,212	1,797	(43)	335	6,060
Income Protection Insurance	5	757	962	1,035	49	(3)	2,805
Marine, Aviation and Transport Insurance	(188)	209	89	36	(12)	21	153
Medical expense insurance	(36)	443	1,348	(746)	140	2	1,151
Miscellaneous Financial Loss	22	115	(0)	(945)	1	(4)	(811)
Motor Vehicle Liability Insurance	-	(88)	-	(101)	-	-	(189)
Non Proportional Casualty Reinsurance	-	-	165	-	-	-	165
Non Proportional Property Reinsurance	-	-	674	-	-	-	674
Other Motor Insurance	41	760	(192)	-	-	(124)	486
Grand Total	764	4,922	6,919	2,811	126	1,059	16,600

The comparison with 2020 reflects growth in key strategic areas targeted by the Company, in particular in Commercial lines.

A.3 Investment Performance

i. Investment Performance

The Company holds a diversified portfolio that is invested in government bonds, corporate bonds, investment in affiliated undertakings, mortgage loans and cash. A summary as presented in the statutory annual accounts is below:

EUR '000s	2020	2021
Holdings in related undertakings, including participations	829	891
Bonds	124,219	148,826
Collective Investments Undertakings	22,299	43,167
Other loans and mortgages	1,499	6,965
Cash and cash equivalents	54,231	30,721
Total	203,077	230,569

The overall investments has increased, along with all asset classes except cash which has reduced.

The investment performance as detailed in the S.09.01.01 annual QRT can be summarised as follows:

2021 (EUR '000s)	Government bonds	Corporate bonds	Collective Investments Undertakings	Mortgages and loans	Cash and cash equivalents	Total
Net income from investments	1,461	830	636	269	-113	3,083
Net gains and losses on investments	-829	8			-13	-833
Unrealised gains and losses on investments	543	-1,551	6,166		58	5,216
Grand Total	1,175	-713	6,802	269	-69	7,465

The company's strategy is that all assets are invested in such a manner as to ensure the security, quality, liquidity and profitability of the portfolio as a whole. Assets are also invested in a manner appropriate to the nature and duration of the Company's insurance liabilities.

The Company is also parent to TIG (Bermuda) Ltd. and its balance sheet includes an asset of EUR 0.9 million in relation to its ownership of this entity. TIG (Bermuda) Ltd. is an insurance company authorised in Bermuda but has not written any new or renewing business for at least the last 10 years. Its net assets comprise a cash / investment portfolio of approximately \$1 million (with nil liabilities).

A.4 Performance of other activities

There are no other activities to disclose.

A.5 Other information

i. Guarantee from Fairfax

The Company benefits from a guarantee provided to it by Fairfax, under which it guarantees the performance of all (re)insurance business written by the Company. Under the terms of this agreement, Fairfax undertakes to pay all valid claims in the event of insolvency of the Company. The agreement remains in force until and automatically terminates on 31 December 2022 (unless renewed or extended by Fairfax) and covers all policies issued or renewed prior to the date of termination of the agreement.

ii. Supervisory Authority

The Company is regulated in Luxembourg by the Commissariat aux Assurances ("CAA") whose address is 7, boulevard Joseph II, L-1840 Luxembourg.

iii. Auditor

The Company's auditor is PwC whose address is 2 Rue Gerhard Mercator, 2182 Luxembourg.

iv. Employees

The number of staff employed across the Company's operations was 502 at 31 December 2021 and 487 in average for 2021.

v. Head office address

The Company's head office address is 1, rue Jean Piret, L-2350 Luxembourg, Grand Duchy of Luxembourg.

B. System of Governance

B.1 General information on the system of governance

i. Introduction

Given the nature of TIG Bermuda (as described in section A.1), the system of governance described within section B relates to that in place within Colonnade Insurance S.A. (the “Company”).

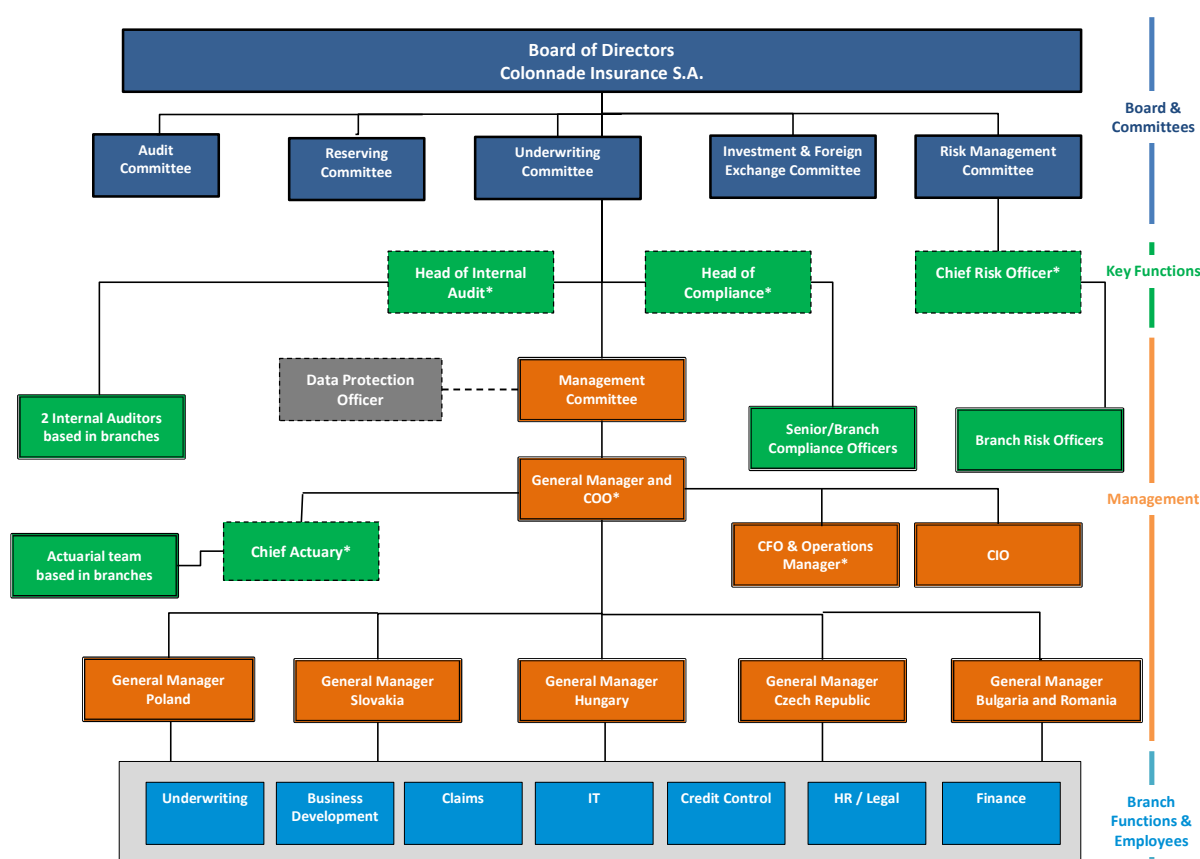
The Company has implemented a system of governance which provides for sound and prudent management. Risk management, compliance, internal audit and actuarial functions which are consistent with the needs of Company’s operations are in place. The Company’s directors have the skills, knowledge and expertise to fulfil their allocated responsibilities and the knowledge and skills of the staff is considered appropriate for the Company. The system of governance is therefore considered proportionate to the nature, scale and complexity of the Company’s business.

There have been no material changes in the system of governance in 2021.

ii. Management and Governance Structure

The Company has a Board of Directors and, currently, five board committees being the Reserving Committee, Risk Management Committee, Underwriting Committee, Investment & Foreign Exchange Committee, an Audit Committee, as well as a Management Committee.

The following diagram summarises the Company’s governance structure.



* Based in Luxembourg

The Board of Directors comprises six Directors until 31 December 2021 (thereafter, five): an executive Director and Chairman, two executive Directors and three independent non-executive Directors.

The membership of the Board of Directors is:

- Mr. Ronald Schokking (Executive Director until 31 December 2021, Chairman)
- Bijan Khosrowshahi (Executive, Chairman as from 1st January 2022)
- Mr. Frederick Gabriel (Non-Executive and Independent)
- Mr. Marnix Wielenga (Non-Executive and Independent)
- Mr. Leo de Waal (Non-Executive and Independent)
- Mr. Jean Cloutier (Executive)

With the exception of Mr. Khosrowshahi, who was appointed to the Board on 28 September 2017, all of the above have been Directors of the Company since it was licenced as a non-life insurer by the CAA on 24 July 2015. Under the Board's terms of reference, the Board is required to meet at least four times a year.

It should be noted that in December 2021 Mr. Ronald Schokking retired and resigned from the Board, including in his role as Chairman. Mr. Bijan Khosrowshahi subsequently took the role of Chairman. No other changes to the Board took place in 2021.

The responsibilities of the Board, and its committees, are set out below:

- The **Board of Directors** has ultimate responsibility for the oversight of the business, senior management and setting the strategy and risk appetite. The Board is responsible for ensuring the maintenance of a sound system of internal control and risk management and for the approval of any changes to the capital, corporate and/or management structure of the Company.
- The **Reserving Committee** oversees the setting of the Company's reserves, liaising closely with the Company's actuarial function.
- The **Risk Management Committee's** role is to ensure the development and implementation of the Company's Enterprise Risk Management Framework, to ensure that appropriate procedures are in place to identify, assess and manage risk from a strategic and operational perspective and to monitor implementation of risk management procedures.
- The responsibilities of the **Audit Committee** include monitoring the Company's financial reporting process; monitoring the effectiveness of the Company's systems of internal control, internal audit and risk management; monitoring the statutory audit of the statutory financial statements; and reviewing and monitoring of the independence of the statutory auditors.
- The **Underwriting Committee** oversees the development of and adherence to the Company's Underwriting Policy, including setting protocols for underwriting authorities, guidelines and rate monitoring as well as rules of conduct for the distribution of our products. It has incorporated a sub-committee for product oversight and governance which oversees the Company's product development and distribution channels as well as the knowledge and ability of the branches local underwriting teams.
- The **Investment & Foreign Exchange Committee** oversees the management of the Company's investment portfolio by Hamblin Watsa (a Fairfax company), ensuring compliance with the investment guidelines established by the Board.

The objective of the Management Committee is to take decisions, or to establish the basis on which all decisions are taken, required to execute the strategy determined by the Board, including all major operational decisions.

The independent, non-executive Directors do not have any executive relationship with the wider Fairfax group. They bring a wide range of experience and expertise from both the insurance and general business sectors.

In addition the company's executive leadership team, including the Luxembourg General Manager, Chief Financial Officer, Chief Risk Officer and the General Managers of each of the six branches meet at least every two weeks by teleconference/video call. At this meeting, the General Manager receives an update from the Branch Managers on operational matters. Legal and regulatory compliance matters are discussed as issues arise and any additional staff members are invited as deemed appropriate.

Furthermore a monthly call is held between the Luxembourg General Manager / Chief Financial Officer and the Branch managers to discuss the performance and development of each branch. A report from the management is presented to the Directors of the Company at each Board of Directors meeting.

iii. Remuneration Policy

The Company has a remuneration policy designed to align the interests of all employees with the interests of the Company. The policy aims to promote sound and effective risk management and is therefore designed to discourage risk-taking that breaches risk appetite for individual risks or threatens Colonnade's capital adequacy. The remuneration and the other terms of employment is designed to be competitive in order to ensure that the Company can attract and retain competent executives.

Remuneration typically consists of fixed components (such as salary) and variable components (such as bonuses). Fixed components make up a sizeable proportion of the overall compensation and variable components are usually set on a discretionary basis. Where this is considered appropriate and necessary, the policy requires that part of variable components are deferred for a period. Variable compensation depends on individual and the Company's performance. The variable part of remuneration of the key functions (Actuarial, Risk, Compliance and Internal Audit) is independent from the performance of the operational units and areas that are submitted to their review.

B.2 Fit and proper requirements

The Company has adopted a Fitness and Probity policy to ensure that individuals who effectively run the Company or otherwise exercise control functions have adequate qualifications, knowledge and experience to enable sound and prudent management (fit) and are of good repute and integrity (proper).

The Directors, senior managers and those exercising control functions must meet the following criteria, amongst others, to be deemed fit and proper:

- Possess appropriate experience, educational or professional qualifications;
- Display a high degree of competency in current and previous roles;
- Demonstrate at all times good integrity, honesty and sound ethical character;

The ongoing assurance of fitness and propriety of the Directors, senior managers and those exercising control functions is re-assessed annually. A register of all persons falling within the Fit and Proper regime is maintained by the Compliance function. The Board of Directors reviews and assesses on an annual basis the competence and suitability of those exercising control functions to ensure these are performing effectively.

Consistent with the requirements of the Insurance Distribution Directive ("IDD") and its transposition into Luxembourg Insurance law, the Company has introduced policies and procedures around ensuring the good repute and appropriateness of knowledge and ability of our customer-facing employees who are directly involved in the distribution of our products. A listing of all persons falling within these

particular requirements is centrally maintained and professional training requirements and completion are centrally monitored.

B.3 Risk management system including the own risk and solvency assessment

i. Risk Management Philosophy

Fairfax is the indirect 100% shareholder and ultimate capital provider to the Company. Fairfax expects its operating divisions, of which Colonnade is one, to act in an autonomous de-centralised way within the guiding principles (the “Guiding Principles”) established by the Fairfax group.

Colonnade’s corporate risk strategy is, therefore, set in the context of the Fairfax Guiding Principles, elements of which are described below:

- We always look at opportunities but emphasize downside protection and look for ways to minimize loss of capital.
- We are entrepreneurial. We encourage calculated risk taking. It is alright to fail but we should learn from our mistakes.
- We will never bet the company on any project or acquisition.

The Company’s risk management framework is described below.

ii. Risk Management Framework (“RMF”)

The Company’s Enterprise Risk Management Framework (“ERM”) has been designed to:

- Provide management and the Board of Directors with reasonable assurance that the organisation’s business objectives will be achieved by aligning risk appetite and strategy, proactively responding to risks, reducing the number of operational incidents and losses, and identifying and managing cross-enterprise risks.
- Facilitate deployment of capital.
- Ensure appropriate corporate governance practices are in place and successfully respond to a changing business environment.
- Assist management in implementing a sound and risk-based internal control system and provide the risk reporting tools to be used to identify significant control lapses/weaknesses and monitor corrective action.
- Guide staff in understanding the risk assessment methodology and strengthen their risk awareness and capability to identify, manage and control business risks.
- Assist the internal audit function in implementing a risk-based audit process for their independent review of the Company's processes.

The key elements of the ERM are:

- **Identification:** Risk events, risks and relevant controls are identified, classified and recorded. This includes in the Company’s risk register.
- **Monitoring:** Risks are assessed and controls are evaluated. This includes reviewing the Risk Register for any changes in the risk assessment (both inherent and residual).

- **Management:** The information resulting from risk identification and measurement is used to improve how the business is managed. For example, key risk indicators (KRIs) are monitored quarterly to provide early warning of any changes in the entities risk profile.

The key categories of risk facing the Company include: insurance, market, credit, liquidity and operational risks.

The Company's strategy for managing its risks includes:

- Identifying and analysing risk through a disciplined risk management process;
- Mitigating, transferring or avoiding risks that do not fit our business objectives; and
- Retaining risk within an agreed risk appetite with appropriate levels of capital.

Risk appetite

The Board sets the Company's risk appetite at an overall level and each of the key categories of risk.

As the strategy and associated strategic objectives evolve, risk appetite is re-evaluated and updated as appropriate. Should a material change to the risk appetite be required outside of the normal annual review process, an evaluation of proposed changes is presented to senior management and then to the Risk Management Committee and the Board for approval.

Risk appetite for each of the key risks, being insurance risk, market risk, liquidity risk, credit risk, operational risk and reinsurance risk, is aligned with the Company's overall risk appetite.

Business decisions are made based on the impact of a decision on the overall risk appetite. Committee reporting at all levels is aligned to risk appetite measures.

The Board receives a quarterly update on performance against the risk appetites. Regular management team meetings and committee meetings taken place that monitor limits and implement remedial actions as required.

iii. Risk Management processes

This section summarises the Company's processes and tools to identify, measure, monitor, manage and report the risks to which the Company is exposed.

Risk identification

The following tools and processes are used in the risk identification process:

- **Risk Register:** The Chief Risk Officer maintains a Risk Register which ensures all key risks and controls are recorded and categorised.
- **Monitoring of risk events:** All employees are required to report all actual and near-miss risk events to the Chief Risk Officer.
- **Emerging risk analysis:** The Board and senior management periodically review the potential for risks not yet on the register to adversely impact the Company. These risks are reviewed and monitored in the business, and then added to the Risk Register if sufficiently material.

Risk measurement

The following tools and processes are used to quantify the risks faced by the Company:

- **Stress testing:** The Company performs stress testing as part of its ORSA process and reports the results to the Risk Committee.

- **Qualitative assessments:** where identified risks are not quantifiable, a view on the likely materiality and nature of such risks is undertaken by the Chief Risk Officer. These risks are reported to the Risk Committee in the same way as quantifiable risks.

Risk management, monitoring and reporting

One of the key objectives of the RMF is to provide senior management and the Board with relevant risk information. The following processes and tools are in place to ensure risks are effectively monitored and escalated:

- **Risk policies:** The Company has developed policies for each of the key risk categories which set out the roles of each committee and the process to be followed to monitor and report risks.
- **Oversight by the Risk Management, Investment & Foreign Exchange, Reserving and Underwriting committees:** These Board-level committees, which meet quarterly, receive periodic updates from the Chief Risk Officer to ensure that risks are effectively monitored and reported.
- **Chief Risk Officer updates to Board:** A quarterly update from the Company's Chief Risk Officer is provided which sets out the key changes to the Company's key risk indicators ("KRIs") and a summary of the key risk activities since the last update.

iv. Own Risk and Solvency Assessment ("ORSA")

The ORSA is defined as the series of processes used to:

- Identify and assess the risks to which Colonnade is or could be exposed to in the short and long term.
- Determine the own funds necessary to ensure that overall solvency needs are met at all times.

The ORSA process undertaken by the Colonnade's Board of Directors (the "Board") and management involved:

- Establishing an appropriate risk management framework;
- Establishing the business strategy;
- Determining the maximum level of risk that Colonnade is willing to tolerate in pursuit of its business strategy;
- Comparing these risk tolerances for individual risks to the risk appetite, and establishing the risk management policies and procedures to manage such risks;
- Identifying risks that may prevent Colonnade from achieving its strategic objectives;
- Performing a forward-looking assessment of solvency needs with a medium or long-term perspective; and
- Stress testing the Company's capital levels for key risks over the business planning period.

An annual report was prepared which summarised the outputs of the ORSA process and which covered the three-year period to 31 December 2024. This report was approved by the Board of Directors and was submitted to the CAA in December 2021.

The ORSA process is proportionate to the nature, scale and complexity of risks at Colonnade and is an integral part of the business decision making process.

The ORSA covers Colonnade Insurance S.A. as a solo insurance company and also as an insurance group as permitted under the third subparagraph of Article 246(4) of Directive 2009/138/EC.

v. **Summary and Effectiveness of the Risk Management Process**

On a quarterly basis, the Risk Management Committee and Board of Directors will monitor the business against the various tolerances and appetites as set out in the Enterprise Risk Management Framework and as agreed by the Board of Directors. This is a key part of the ongoing management of the company that contributes to an effective ORSA process.

Accountability for risk management responsibilities is set forth in the Company's ERM framework and risk management policies. The governance hierarchy of risk management is illustrated in the chart set out in section B.1.ii ("*Management and Governance Structure*").

This structure leads to an effective Risk Management structure as:

- Sufficient oversight is provided to the Board of Directors.
- The assessment of the effectiveness of controls is documented in the risk register and approved by the Board.
- The Luxembourg based management team have sufficient oversight around the management of risk in the Company and risks which must be managed holistically.
- Sufficient ownership and accountability is delegated to the branches where many of the day to day risks are taken.

Risk management is implemented through the branches via a number of ways:

- General Managers are responsible for embedding good risk management practices in their branches.
- All employees are required to practice risk awareness and risk management as part of the working culture of the Company.
- Each branch has a Risk Manager who oversees risk management at a branch level. This is overseen by the Chief Risk Officer.

B.4 Internal control system

i. Overview

The Company's internal controls framework is made up of:

- The control environment - the culture and organisational structures that support sound internal control;
- Risk assessment – to determine controls that should be implemented to manage identified risks to within tolerance levels;
- Control activities – the elements of effective control design and operation;
- Information and communication – reporting lines to report achievement of goals and adverse reporting to the Board and its sub-committees; and
- Monitoring and oversight - supporting the oversight and governance of internal control.

In order to ensure the ongoing effectiveness and efficiency of the control framework, the Company operates a "**three lines of defence model**". Each of these three "lines" plays a distinct role within the Company's wider governance framework, as described overleaf.

- Controls are the responsibility of the business and relevant line management, i.e. the '**first line of defence**'. As the first line of defence, line management is responsible for monitoring day to day adherence to this framework within its area of jurisdiction. There is close interaction

between management based in Luxembourg and those located in the Company's branch offices.

- Assurance, or the '**second line of defence**', is provided by employees who are independent from business line management. Assurance functions include Risk Management and Compliance. Second line of defence assurance functions monitor compliance to the control framework. Breaches are reported to the Board and the Risk Committee on an exceptions-basis as appropriate.
- The '**third line of defence**' is provided by Internal Audit and the Audit Committee. Independent non-executive directors comprise the majority of the Audit Committee.

Ultimate responsibility for implementing and monitoring the Internal Control Framework resides with the Board. The Internal Control Framework is reviewed and approved by management and the Board on an annual basis.

B.5 Compliance

The Company's Head of Compliance has overall responsibility for overseeing compliance related activities across the Company and reports directly to the Board, on a quarterly basis, on compliance related matters and activities of relevance to the Company.

In executing the Company's risk-based compliance monitoring programme, the Head of Compliance works closely with local branch compliance officers appointed by the branch managers. The branch compliance officers are responsible for carrying out compliance monitoring activities within their respective branch. They are also responsible for ensuring their branch complies with applicable local legal and regulatory requirements. Each branch compliance officer reports directly to their branch manager and the Head of Compliance in respect of their duties.

B.6 Internal audit function

The Company's Chief Internal Auditor is based in its head office in Luxembourg, with a remit extending to the Company's branch operations. The Internal Audit Department is responsible for evaluating the effectiveness and adequacy of the internal control system and other areas of governance within the Company.

Internal Audit activity is driven by a three year Internal Audit planning cycle which covers all areas of the Company's activities. A "rolling" three year Internal Audit plan, together with the proposed internal audit activities for the coming year, is approved annually by the Audit Committee and the Board. This utilises a risk based approach to ensure that the internal audit plan provides adequate coverage of business activities with a particular focus on the higher risk areas of the business and taking into account the specificities of the Company.

The Internal Auditors do not assume any other key functions within the Company.

B.7 Actuarial function

The Company's Luxembourg based Chief Actuary is responsible for setting the Company's technical provisions, which are developed in accordance with Fairfax Group reserving policies and local requirements (including Solvency II). The Chief Actuary is also a member of the Company's Reserving Committee and Underwriting Committee. Additionally, amongst other duties, the Chief Actuary is responsible for preparing an opinion on the Company's underwriting policy and the adequacy of the reinsurance arrangements in place as well as contributing to the effective implementation of the risk management system.

In discharging these duties, the Chief Actuary works closely with actuarial resources located in the Company's branches as well as other business functions; namely Underwriting, Finance, Risk Management, Claims and Operations.

B.8 Outsourcing

The Board of Directors is responsible for all of Colonnade's activities, irrespective of whether the function is outsourced or not. None of the key functions (Actuarial, Risk, Compliance and Internal Audit) in the Company are outsourced.

Intra company outsourcing arrangements are subject to the same level of diligence and monitoring as third-party service providers. Terms are negotiated on an arm's length basis.

Investment management services are the only critical and important activity where the Company has outsourced the services. HWIC, a Fairfax group company located in Canada, typically centralises all investment activities of Fairfax group companies. This activity is overseen by the Company's Investment & Foreign Exchange Committee while the person in charge of the outsourced function is the Company's Chief Financial Officer. Investment monitoring, including compliance and accounting, are performed locally under his supervision.

Concerning the claims handling function, and more particular the assistance services under our travel and health covers, these are outsourced to external assistance providers in all our branches with the exception of the major part of travel coverage issued in our Hungarian branch, where the assistance services are provided by the branch.

The Company's outsourcing policy includes a notification process for any critical or important function or activity and assigns the responsibility for overseeing each of the outsourced activities to an individual within the Company who has the requisite knowledge and experience. The Outsourcing policy is reviewed and approved by both management and the Board each year and more frequently, if required.

Furthermore, Fairfax's head office (in Toronto) as well as *ffh* Management Services, a Fairfax group company located in Ireland, would provide support services, as may be required from time to time by any of our key functions.

B.9 Other information

All relevant information regarding the Company's governance and control structures is considered to be included in sections B1-B7 above.

C. Risk profile

Given the nature of TIG Bermuda (as described in section A.1), the risk profile described within section C (other than market, credit and liquidity) relates to that of Colonnade Insurance S.A. (the “Company”).

The Company’s activities expose it to a number of key risks which have the potential to affect its ability to achieve its business objectives. The main risks facing the Company’s business include insurance (underwriting and reserving), market, credit, liquidity and operational risks. The Company’s approach to managing these risks is as follows:

C.1 Insurance risk

i. Underwriting risk

Underwriting risk includes both the risk of inappropriate underwriting and inadequate pricing.

The insurance risk management policy covers the underwriting, claims and actuarial department and addresses risks such as inappropriate or unauthorised underwriting and pricing and inadequate controls around recording and reporting of underwriting results and exposures. Metrics have been developed for the ongoing monitoring of insurance risks. A summary by Solvency II line of business and branch is in section A.2 (“*Underwriting Performance*”).

Control structures are in place to mitigate the risk of accumulations of loss from catastrophic events and the Company is further protected by the reinsurance programme comprising a range of quota share and excess of loss contracts that cover the different lines of business written by the Company (for example, the Company’s net exposure to a natural catastrophe event is limited to EUR 2 million).

ii. Reserving risk

This is the risk that unpaid loss reserves prove to be inadequate. The Company has recorded gross reserves for unpaid losses of EUR 145.1 million (which are in addition to a gross unearned premium reserve amounting to EUR 78.4 million) in the Luxembourg GAAP financial statements at 31 December 2021.

Colonnade has an Actuarial Function, to assess reserving levels, working in close cooperation with underwriting and claims staff within each of the branches. Oversight and reserve setting and compliance with the reserving policy (as established by the Board of Colonnade) are the responsibility of the Reserving Committee which meets quarterly. Fairfax’s actuarial team will also periodically review final reserve selections as part of the independent peer review process.

C.2 Market risk

At 31 December 2021, the Group’s investment portfolio comprised cash (EUR 30.8 million), bonds (EUR 149.7 million), Collective Investment Undertakings (EUR 43.2 million) and mortgages (EUR 7.0 million). The Company’s market risk exposure mainly resulted from currency risk exposure (given that the Company undertakes business in multiple currencies) and equity risk, with interest rate, spread and concentration risks in addition.

The market risk management policy covers the various market risks. For example, the Company has established limits for each asset class and for net unhedged foreign currency exposure. Key risk indicators such as interest rates, credit quality and investment return, are monitored to assess the appropriateness and riskiness of market risk exposures.

The Investment and Foreign Exchange Committee reviews and oversees market risks, including ensuring that the investments made are in accordance with the Company's risk appetite and investment policy, which is consistent with the 'prudent person principle'. For example, the net exposure to currencies is measured in the KRIs and reported regularly to the Investment and Foreign Exchange Committee.

During 2022 the investment portfolio is expected to continue to include assets such as mortgages and equities. This risk is being overseen by the Investment and Foreign Exchange Committee.

C.3 Credit risk

This is the risk that one party to a financial arrangement will fail to discharge an obligation and cause the other party to incur a financial loss. The main sources of credit risk relate to:

- **Reinsurers:** through the failure to pay valid claims against a reinsurance contract held by the Company.
- **Premium debtors:** where a broker, intermediary or policyholder fails to pass on premiums or claims collected or paid on behalf of the Company.
- **Investments:** through the issuer default of all or part of the value of a financial instrument or the market value of that instrument.

Reinsurance credit risk

Credit risk from reinsurers is controlled through only transacting with reinsurers that meet certain minimum requirements.

At 31 December 2021, the Company's largest balance sheet exposure to reinsurers is with AIG, rated A2 by Moody's.

The Company's premium debtors arising from direct insurance and reinsurance operations are EUR 37.2 million and EUR 6.3 million respectively as at 31 December 2021. Debtors are valued at the lower of their nominal or estimated realisable value. The credit risk associated with these receivables is considered low.

Investment credit risk

Credit risk relating to financial investments and cash and cash equivalents is monitored by the Investment & Foreign Exchange Committee, which is responsible for the management of investment credit risk.

At 31 December 2021, the Group has an exposure to credit risk in relation to cash held with credit institutions (EUR 30.8 million). Cash is placed, in accordance with established policy, with credit institutions having a rating of at least A-, except for immaterial exposures approved by the Risk Management Committee.

C.4 Liquidity risk

This is the risk the Group, though solvent, may encounter difficulty in meeting obligations associated with financial liabilities as they fall due.

The Group monitors the levels of cash and investments to ensure liquidity requirements are addressed. The Group's exposure to liquidity risk is considered low, given the significant cash balances held at 31 December 2021 (EUR 30.8 million) and throughout the reporting period.

The Expected Profit in Future Premiums (EPIFP) is the profit relating to existing contracts with premium due in the future but not yet received at the valuation date. The EPIFP amounts to EUR 11.5 million at 31 December 2021.

C.5 Operational risk

Operational risk is defined as the risk of loss resulting from inadequate or failed internal processes, people, and systems, or from external events.

Managing day-to-day operational risk is the responsibility of the line managers, both within Luxembourg and the branch offices. This includes responsibility for managing claims risks through policies and procedures including defining authority levels, protocols for management oversight, a system to support and report on major claims activity and a formal review process for major claims. The Company's investment managers, along with the company management, are responsible for establishing processes and controls to ensure an effective risk management framework with regard to investments. Operational risks through exposures to key counterparties like banks are predominantly managed by the Luxembourg management team whereas risks arising from relationships with brokers and other local counterparties are the responsibility of local branch managers.

C.6 Other Material Risks and Stress and Scenario testing

In 2021 the Company was embarking upon the Colonnade Transformation program, Project Phoenix. The goal of the program is to transform Colonnade to a modern insurance company that addresses the customer needs in our rapidly changing environment. It is anticipated that this project will positively impact the operational capability of the Company and therefore change both the operational risk profile as well as our ability to support customers through insurance.

The Company also analysed the emerging risk of inflation through the ORSA review. This continues to be monitored closely by the Company.

Stress and Scenario testing

As part of the ORSA process, stress and scenario testing was undertaken to ensure the key risks identified were modelled to assess their impact on the SCR, income statement and resulting solvency ratio. This featured events considerably more severe than the Company's experience to date. The results of the testing are summarised in the annual ORSA report reviewed by the Board and submitted to the CAA. The latest exercise confirms that the Company has own funds to absorb the losses under each scenario considered and remain viable.

C.7 Other information

The Risk Management Committee, including the Chief Risk Officer, monitors the Company's risk profile, including Key Risks Indicators (KRIs) as set out in the RMF. This includes monitoring where they are supported by risk mitigation methods, such as reinsurance, and their continued effectiveness.

D. Valuation for solvency purposes

Under Luxembourg law, the Company is exempt from the requirement of producing group consolidated financial statements. The Company prepares its financial statements on a going concern basis and in accordance with Luxembourg GAAP ("Lux GAAP"), as detailed therein.

The table below summarises the Company's balance sheet under Lux GAAP and Solvency II bases:

Balance sheet as at 31 December 2021 (EUR'000)	Lux GAAP	Solvency II	Difference
Assets			
Subscribed, uncalled and unpaid capital	-	-	-
Deferred acquisition costs	17,818.5	-	(17,818.5)
Intangible assets	9,589.2	-	(9,589.2)
Deferred tax assets	-	1.1	1.1
Holdings in related undertakings, including participations	-	-	-
Reinsurance recoverables	46,337.4	17,492.4	(28,845.0)
Insurance, reinsurance and intermediaries receivables	43,467.1	17,346.0	(26,121.1)
Cash and cash equivalents	30,750.4	30,750.6	0.2
Bonds	149,704.9	150,441.3	736.4
Other Loans and Mortgages	6,965.0	7,020.7	55.7
Collective Investments Undertakings	43,167.4	49,084.2	5,916.8
Property, plant & equipment held for own use	1,634.0	1,634.0	-
Other assets, not elsewhere shown	12,848.8	11,015.3	(1,833.4)
Total Assets	362,282.8	284,785.7	(77,479.1)
Liabilities			
Technical Provisions	223,414.2	146,382.1	(77,032.1)
Insurance & intermediaries payables	17,936.9	-	(17,936.9)
Reinsurance payables	7,893.0	-	(7,893.0)
Deferred tax liabilities	-	1,399.6	1,399.6
Payables (trade, not insurance)	15,526.4	13,916.2	(1,610.3)
Total Liabilities	264,770.5	161,697.9	(103,072.6)
Excess of assets over liabilities	97,512.3	123,087.8	25,575.5

The difference between the shareholder equity in the Lux GAAP financial statements (EUR 97.5 million) and the excess of assets over liabilities on the Solvency II balance sheet (EUR 123.1 million) amounts to EUR 25.6 million and results from the differing valuation / balance sheet treatment of certain assets and liabilities, such as technical provisions, under Lux GAAP and Solvency II. These are described below.

D.1 Assets

The most material differences in valuation between Lux GAAP and Solvency II are discussed below.

i. Deferred Acquisition Costs

Deferred Acquisition Costs on the Lux GAAP balance sheet are recognised under Solvency II rules, in line with the recognition of the best-estimate cashflows associated with the gross Unearned Premium reserve.

ii. Intangible assets

In accordance with Solvency II requirements, intangible assets recognised in the Lux GAAP financial statements (being policy data rights; software; and concessions, patents, licences and trademarks) have been ascribed a nil value.

iii. Deferred Tax Assets / Liabilities

The Solvency II balance sheet includes a deferred tax assets and liabilities, which reflect the difference in equity between the balance sheets allowing for a change in basis of various pre-tax items.

iv. Reinsurance recoverables

The reinsurance recoverables have been determined on a best estimate basis and consider those associated with the premium provision and claims provision, in line with the Solvency II rules.

v. Insurance, reinsurance and intermediaries receivables

Consistent with the Solvency II regulations, the technical provisions include claims expenses and premium cash flows. Therefore, future due insurance and intermediary receivables are incorporated within the Solvency II technical provisions, whereas they are shown separately on the Lux GAAP balance sheet.

vi. Investments

Investments are calculated in accordance with international accounting standards, as per the Solvency II guidelines, which differs from Lux GAAP.

D.2 Technical provisions

i. Solvency II Technical Provisions as at 31 December 2021

A breakdown of the Solvency II technical provisions as at 31 December 2021 is provided below (amounts in EUR'000):

EUR'000	Best Estimate	Risk Margin	Total
Gross	135,183	11,200	146,382
Reinsurers' share	-17,492	0	-17,492
Net	117,690	11,200	128,890

Details of the net technical provisions by Solvency II LoB as at 31 December 2021 are as follows (amounts in EUR'000s):

Solvency II LoB	Net Best Estimate	Risk Margin	Total
Medical Expense Insurance	3,780	360	4,140
Income Protection Insurance	8,091	770	8,861
Motor Vehicle Liability Insurance	929	88	1,018
Other Motor Insurance	8,663	824	9,488
Marine, Aviation and Transport Insurance	1,948	185	2,133
Fire and Other Damage to Property Insurance	42,019	3,999	46,017
General Liability Insurance	50,574	4,813	55,386
Credit and Suretyship Insurance	26	2	28
Miscellaneous Financial Loss	1,081	103	1,184
Non Proportional Casualty Reinsurance	104	10	114
Non Proportional Property Reinsurance	476	45	521
Total	117,690	11,200	128,890

An analysis of the difference between the technical provisions on a Lux GAAP and Solvency II basis by Solvency II Line of Business as at 31 December 2021 is shown below (amounts in EUR'000s):

Solvency II LoB	Net Insurance Liabilities	Reclassification Adjustments	Solvency II Basis Change	Solvency II TPs
Medical Expense Insurance	6,491	-1,329	-1,022	4,140
Income Protection Insurance	12,241	-1,340	-2,041	8,861
Motor Vehicle Liability Insurance	1,306	-235	-54	1,018
Other Motor Insurance	30,014	-13,630	-6,896	9,488
Marine, Aviation and Transport Insurance	3,208	-759	-316	2,133
Fire and Other Damage to Property Insurance	58,030	-9,292	-2,721	46,017
General Liability Insurance	78,810	-5,876	-17,547	55,386
Credit and Suretyship Insurance	148	1	-122	28
Miscellaneous Financial Loss	3,826	-1,750	-892	1,184
Non Proportional Casualty Reinsurance	176	-32	-30	114
Non Proportional Property Reinsurance	763	-195	-47	521
Total	195,014	-34,436	-31,688	128,890

The 'Net Insurance Liabilities' include earned reserves and UPR net of reinsurance and commissions.

The reclassification adjustments reflect where cash flows in (such as insurance balances receivable) are offset against cash flows out (such as future claims payments) in the Solvency II balance sheet and do not result in a difference in the valuation of balance sheet equity. The differences in basis that impacts the equity are discussed further below (see sub-section vii).

ii. Reserving Process and Governance

The Company's reserving process to determine the technical provisions on GAAP and Solvency II bases as at 31 December 2021 broadly comprises the following steps, as part of a robust and rigorous process for setting reserves:

- Determination and recommendation of ultimate claims by the Actuarial Function;
- Review/validation by the branches;
- Determination of the technical provisions to adopt in the GAAP/Solvency II technical provisions; and
- Review and approval by the Reserving Committee / Board.

iii. Key methodology and assumptions used to determine ultimate premiums and claims

To determine the estimate for ultimate premiums and claims, analysis is undertaken separately for each line of business.

For the majority of the classes of business, the following standard actuarial projection techniques are considered to calculate ultimate premiums and claims:

- Basic Chain Ladder (based on paid and incurred claims)
- Bornhuetter-Ferguson (based on paid and incurred claims)
- Initial Expected Loss Ratio

Claim experience on the most recent years of account is relatively immature. As a result, the Basic Chain Ladder methods produce estimates with a relatively higher level of uncertainty. When projecting estimates for these years of account, the Bornhuetter-Ferguson and Initial Expected Loss Ratio methods are used instead.

Specific adjustments may be made to projected ultimate claims at either a class or an individual claim level. This may be due to a known large loss and/or loss experience on a particular contract.

When choosing between methods, the maturity of each year of account, volume of data, benchmark information and other business-specific issues that are known about at the time of valuation are taken into account.

iv. Key methodologies and assumptions used to determine best estimate technical provisions on a GAAP and Solvency II basis

Having determined the ultimate premiums and claims to form the basis for the technical provisions, a number of additional material assumptions are required to determine the technical provisions on a GAAP and Solvency II basis:

- **Writing and earnings patterns** – used to determine the level of earned, unearned and bound but not incepted (BBNI) premiums. These are based on the historic inception and expiry dates of the underlying contracts.
- **Expense provisions** – an Unallocated Loss Adjustment Expenses (ULAE) provision is held within the GAAP technical provisions. In addition, expense provisions are required within the Solvency II technical provisions in respect of premiums, claims and investments which represent the on-going servicing of the business included in the valuation.
- **Payment patterns** – used to determine the cash flow profiles. When calculating technical provisions to demonstrate solvency on a Solvency II basis, the time-value of money must be allowed for. This requires the estimation of timing and quantum of future cash flows associated with the technical provisions. These cash flows are then discounted back to present value using risk-free yield curves.
- **Risk free yield curves** – by currency and based on those set by EIOPA.
- **Events Not In Data (ENID)** – designed to capture those potential future cashflows that do not exist in any historical data or assumptions used for the LuxGAAP calculation.

A Risk Margin, being the expected cost of capital to support the run-off of the technical provisions, is also added and is calculated based on the standard formula and discounted using a yield of 6% as set by EIOPA.

v. Reserve Uncertainty

The key uncertainties surrounding the technical provisions relate to the ultimate unpaid claims reserves. These uncertainties are present on both a financial accounting and Solvency II basis. However, in determining the ultimate unpaid claims reserves, it was established that the Company was not exposed to any individual or aggregation of large losses which increased the uncertainty of the Company's reserves beyond the normal range of uncertainty for insurance liabilities at this stage of development.

vi. Impact of Reinsurance

The impact of reinsurance on the Solvency II technical provisions is quantified above.

vii. Material differences between technical provisions on GAAP and Solvency II bases

The key differences between the GAAP and Solvency II technical provisions are:

- **Profit on Unearned Premiums** – the UPR is based on 100% of unearned premium on a GAAP basis, whereas under Solvency II, profit relating to the unearned premium is recognised at the relevant expected loss ratio plus an allowance for expenses.
- **Additional Solvency II adjustments** - in addition to the Unallocated Loss Adjustment Expenses (ULAE) and bad debt held on a GAAP basis, provisions are required in respect of premiums, claims and investment expenses which represent the on-going servicing of the business included in the valuation, as well as ENID. Also, any additional reserves set by the management on a GAAP basis are removed, in line with the Solvency II rules.
- **Discounting** - the impact of discounting using yield curves provided by EIOPA as at 31 December 2021.
- **Risk Margin** – the load required for the Risk Margin as at 31 December 2021.

In valuing the Solvency II technical provisions:

- There are no matching adjustments applied.
- There are no volatility adjustments used.
- There are no transitional risk-free interest term structures applied.
- There are no transitional deductions applied.

D.3 Other liabilities

For all liabilities other than the technical provisions, there are no valuation differences between the LuxGAAP and Solvency II bases.

D.4 Alternative methods for valuation

There are no alternative valuation methods to disclose.

D.5 Other information

All relevant information regarding the Company's valuation methodologies is considered to be included in sections D1-D4 above.

E. Capital management

E.1 Own funds

i. Policy

The Company's capital management policy sets out capital requirements and principles of funding and states the importance of ensuring that the Group and Company are sufficiently capitalised at all times and complies with the Solvency II requirements. Responsibility for ensuring compliance with this policy rests with the Board of the Company.

Aligned to the process for the ORSA described in section B.3.1v ("*Own Risk and Solvency Assessment*"). The Company performs capital assessments over a 3-year time horizon on an annual basis to ensure the Company is very adequately capitalised in the medium term. The objectives, process and policy have not materially changed in 2021.

ii. Capital requirements

With effect from 1 January 2016, the Solvency II regime provides for the valuation of both assets and liabilities on a market consistent basis.

The Solvency Capital Requirement ("SCR") is the amount of capital required to ensure continued solvency over a one-year time frame with a probability of 99.5%. The Company calculates its SCR using the standard formula specified in detail in the Solvency II legislation.

The absolute minimum level of capital required under Solvency II is the Minimum Capital Requirement (MCR). This amount is lower than the SCR and defines the point of intensive regulatory intervention.

Under Solvency II, capital is referred to as Own Funds and a distinction is made between Basic Own Funds (BOF) and Ancillary Own Funds (AOF). Capital starts with the excess of assets over liabilities on the Solvency II balance sheet (EUR 123.1 million at year end 2021) to which qualifying subordinated debt are added (the Company has no subordinated debt) to arrive at Basic Own Funds. Off balance sheet items that may absorb losses are known as Ancillary Own Funds (the Company has none at 31 December 2021).

The Own Funds are classified into tiers of Own Funds and restrictions are applied to limit the extent to which the components of Own Funds can be used to meet the capital requirements (SCR and MCR).

Deferred taxes are calculated in accordance with international financial reporting standards, for the purposes of valuing the balance sheet. The SCR has not been adjusted for the loss absorbing capacity of technical provisions.

iii. Reconciliation of Lux GAAP Net Equity to Solvency II Own Funds

The following table compares shareholders' equity as set out in the Company's Lux GAAP financial statements to the Solvency II Available Own Funds at 31 December 2021.

EUR'000	31/12/2021	31/12/2020
Lux GAAP shareholders' equity	97,512	92,875
Intangibles	-9,589	-3,091
Net Deferred Tax Assets / Liabilities	-1,399	3,732
Investments / Holdings	4,876	0
Revaluation of Non-Life reserves	31,688	18,047
Solvency II Available Own Funds	123,088	111,562

The composition of the Company's Solvency II Available Own Funds at 31 December 2021 is set out in the following section.

iv. Own Funds structure as at 31 December 2021

Whilst Basic Own Funds may fall within one of three tiers, Ancillary Own Funds are only permitted to form part of Tier 2 or 3 reflecting the fact they are not on the balance sheet.

EUR'000	Tier 1 Unrestricted BOF	Tier 2 Ancillary	Tier 3 BOF	Total
Subscribed capital	9,500			9,500
Share premium account	94,876			94,876
Net Deferred Tax Assets			1	1
Reconciliation reserve	18,710			18,710
Total Own Funds	123,087	0	1	123,088

The Company's subscribed capital and share premium reserve have each been classified as Tier 1 capital. The reconciliation reserve is also classified as Tier 1 capital in accordance with the Solvency II guidelines. The reconciliation reserve has been calculated as follows:

Reconciliation reserve	EUR'000
Excess of assets over liabilities	123,088
Less:	
Subscribed Capital	-9,500
Share Premium	-94,876
Net Deferred Tax Assets	-1
Reconciliation Reserve	18,710

v. Eligible Own Funds at 31 December 2021

The classification into tiers is relevant to the determination of eligible own funds – being the own funds that are eligible to cover the MCR and SCR.

The MCR may only be covered by Tier 1 and Tier 2 basic own funds (Tier 2 ancillary own funds and Tier 3 basic own funds are not eligible to cover the MCR).

The table below shows the amount of eligible own funds to cover the SCR and MCR by tier:

EUR'000	Total eligible own funds	Tier 1 Unrestricted BOF	Tier 2 Ancillary	Tier 3 BOF
Total eligible own funds to meet the SCR	123,088	123,087	0	1
Total eligible own funds to meet the MCR	123,087	123,087	0	0

EUR 123.1 million (>99%) of the company's eligible own funds are unrestricted tier 1 capital. This consists of the Company's subscribed capital, share premium and the reconciliation reserve. The approach to classifying Own Funds by tier has remained consistent during 2021 with only Net Deferred Tax Assets classified as Tier 3 and the remainder as Tier 1.

vi. Eligible Own Funds to cover capital requirements (SCR and MCR)

The table below presents the ratio of eligible own funds that the Company holds to cover its capital requirements at 31 December 2021.

Metric	EUR'000
SCR	76,308
MCR	24,976
Capital available for SCR	123,088
Capital available for MCR	123,087
Ratio SCR	161%
Ratio MCR	493%

E.2 Solvency capital requirement and Minimum capital requirement

The Group uses EIOPA's Solvency II Standard Formula to calculate its SCR. It does not use Group specific parameters and does not use simplified calculations in its computation. The table below sets out the capital requirements for each risk module of the Standard Formula.

Capital requirement for each risk module (EUR'000)	Net solvency capital requirement
Non-life underwriting risk	43,819
Life underwriting risk	0
Health underwriting risk	12,016
Market risk	32,178
Counterparty default risk	13,881
Diversification	-30,438
Basic Solvency Capital Requirement	71,455
Operational risk	4,853
Solvency Capital Requirement ("SCR")	76,308

As at 31 December 2021, the main component of the Group's SCR is non-life underwriting risk, particularly premium risk, in expectation of the premiums to be earned in 2022. Reserve risk, based on the claims provisions within the technical provisions is also a major component. Also included within non-life underwriting risk is a catastrophe risk charge which relates primarily to natural catastrophe exposures (flood, earthquake, windstorm and hail).

The next most significant component of the SCR is market risk. Market risk mainly results from currency risk exposure (given that the Company undertakes business in multiple currencies), equity risk, with additional interest rate, spread and concentration risks.

The subsequent most significant component is counterparty default risk which includes risks associated with reinsurance, insurance balances receivable and cash at bank.

The other components of Colonnade's SCR are health underwriting risk and operational risk. Health underwriting risk mainly relates to the Medical Expenses and Income Protection Solvency II lines of business.

The Minimum Capital Requirement at 31 December 2021 is EUR 25.0 million which is based on the Linear MCR calculation.

E.3 Use of the duration-based equity sub-module in the calculation of the Solvency capital requirement

As the Group does not write life insurance business, the duration-based equity risk sub-module set out in Article 304 is not relevant.

E.4 Difference between the standard formula and any internal model used

As the Group does not utilise an internal capital model, this is not relevant.

E.5 Non-compliance with the Minimum Capital requirement with the Solvency Capital requirement

There has been no non-compliance with the MCR or SCR during the reporting period, and the Group is expected to remain compliant going forwards.

Colonnade Insurance S.A. (Group)

Solvency and Financial Condition Report

Disclosures

31 December
2021

(Monetary amounts in EUR thousands)

General information

Participating undertaking name	Colonnade Insurance S.A. (Group)
Group identification code	222100IUSAKCDAYTMX08
Type of code of group	LEI
Country of the group supervisor	LU
Language of reporting	en
Reporting reference date	31 December 2021
Currency used for reporting	EUR
Accounting standards	Local GAAP
Method of Calculation of the group SCR	Standard formula
Method of group solvency calculation	Method 1 is used exclusively
Matching adjustment	No use of matching adjustment
Volatility adjustment	No use of volatility adjustment
Transitional measure on the risk-free interest rate	No use of transitional measure on the risk-free interest rate
Transitional measure on technical provisions	No use of transitional measure on technical provisions

List of reported templates

- S.02.01.02 - Balance sheet
- S.05.01.02 - Premiums, claims and expenses by line of business
- S.05.02.01 - Premiums, claims and expenses by country
- S.23.01.22 - Own Funds
- S.25.01.22 - Solvency Capital Requirement - for groups on Standard Formula
- S.32.01.22 - Undertakings in the scope of the group

S.02.01.02
Balance sheet

Solvency II value	
C0010	
	1
	1,634
	199,526
	0
	0
	0
	150,441
	113,018
	37,423
	0
	0
	49,084
	0
	0
	7,021
	0
	7,021
	17,492
	17,492
	17,767
	-275
	0
	0
	17,346
	0
	30,751
	11,015
	284,786

Assets	
R0030	Intangible assets
R0040	Deferred tax assets
R0050	Pension benefit surplus
R0060	Property, plant & equipment held for own use
R0070	Investments (other than assets held for index-linked and unit-linked contracts)
R0080	<i>Property (other than for own use)</i>
R0090	<i>Holdings in related undertakings, including participations</i>
R0100	<i>Equities</i>
R0110	<i>Equities - listed</i>
R0120	<i>Equities - unlisted</i>
R0130	<i>Bonds</i>
R0140	<i>Government Bonds</i>
R0150	<i>Corporate Bonds</i>
R0160	<i>Structured notes</i>
R0170	<i>Collateralised securities</i>
R0180	<i>Collective Investments Undertakings</i>
R0190	<i>Derivatives</i>
R0200	<i>Deposits other than cash equivalents</i>
R0210	<i>Other investments</i>
R0220	Assets held for index-linked and unit-linked contracts
R0230	Loans and mortgages
R0240	<i>Loans on policies</i>
R0250	<i>Loans and mortgages to individuals</i>
R0260	<i>Other loans and mortgages</i>
R0270	Reinsurance recoverables from:
R0280	<i>Non-life and health similar to non-life</i>
R0290	<i>Non-life excluding health</i>
R0300	<i>Health similar to non-life</i>
R0310	<i>Life and health similar to life, excluding index-linked and unit-linked</i>
R0320	<i>Health similar to life</i>
R0330	<i>Life excluding health and index-linked and unit-linked</i>
R0340	<i>Life index-linked and unit-linked</i>
R0350	Deposits to cedants
R0360	Insurance and intermediaries receivables
R0370	Reinsurance receivables
R0380	Receivables (trade, not insurance)
R0390	Own shares (held directly)
R0400	Amounts due in respect of own fund items or initial fund called up but not yet paid in
R0410	Cash and cash equivalents
R0420	Any other assets, not elsewhere shown
R0500	Total assets

S.02.01.02
Balance sheet

Solvency II value	
C0010	
R0510	146,382
R0520	133,656
R0530	
R0540	123,587
R0550	10,070
R0560	12,726
R0570	0
R0580	11,596
R0590	1,130
R0600	0
R0610	0
R0620	
R0630	
R0640	
R0650	0
R0660	
R0670	
R0680	
R0690	0
R0700	
R0710	
R0720	
R0740	
R0750	
R0760	
R0770	
R0780	1,400
R0790	
R0800	
R0810	
R0820	
R0830	
R0840	13,916
R0850	0
R0860	
R0870	0
R0880	
R0900	161,698
R1000	123,088

Liabilities

R0510	Technical provisions - non-life
R0520	<i>Technical provisions - non-life (excluding health)</i>
R0530	<i>TP calculated as a whole</i>
R0540	<i>Best Estimate</i>
R0550	<i>Risk margin</i>
R0560	<i>Technical provisions - health (similar to non-life)</i>
R0570	<i>TP calculated as a whole</i>
R0580	<i>Best Estimate</i>
R0590	<i>Risk margin</i>
R0600	Technical provisions - life (excluding index-linked and unit-linked)
R0610	<i>Technical provisions - health (similar to life)</i>
R0620	<i>TP calculated as a whole</i>
R0630	<i>Best Estimate</i>
R0640	<i>Risk margin</i>
R0650	<i>Technical provisions - life (excluding health and index-linked and unit-linked)</i>
R0660	<i>TP calculated as a whole</i>
R0670	<i>Best Estimate</i>
R0680	<i>Risk margin</i>
R0690	Technical provisions - index-linked and unit-linked
R0700	<i>TP calculated as a whole</i>
R0710	<i>Best Estimate</i>
R0720	<i>Risk margin</i>
R0740	Contingent liabilities
R0750	Provisions other than technical provisions
R0760	Pension benefit obligations
R0770	Deposits from reinsurers
R0780	Deferred tax liabilities
R0790	Derivatives
R0800	Debts owed to credit institutions
R0810	Financial liabilities other than debts owed to credit institutions
R0820	Insurance & intermediaries payables
R0830	Reinsurance payables
R0840	Payables (trade, not insurance)
R0850	Subordinated liabilities
R0860	<i>Subordinated liabilities not in BOF</i>
R0870	<i>Subordinated liabilities in BOF</i>
R0880	Any other liabilities, not elsewhere shown
R0900	Total liabilities
R1000	Excess of assets over liabilities

S.23.01.22

Own Funds

Basic own funds before deduction for participations in other financial sector

R0010	Ordinary share capital (gross of own shares)
R0020	<i>Non-available called but not paid in ordinary share capital at group level</i>
R0030	Share premium account related to ordinary share capital
R0040	Initial funds, members' contributions or the equivalent basic own-fund item for mutual and mutual-type undertakings
R0050	Subordinated mutual member accounts
R0060	<i>Non-available subordinated mutual member accounts at group level</i>
R0070	Surplus funds
R0080	<i>Non-available surplus funds at group level</i>
R0090	Preference shares
R0100	<i>Non-available preference shares at group level</i>
R0110	Share premium account related to preference shares
R0120	<i>Non-available share premium account related to preference shares at group level</i>
R0130	Reconciliation reserve
R0140	Subordinated liabilities
R0150	<i>Non-available subordinated liabilities at group level</i>
R0160	An amount equal to the value of net deferred tax assets
R0170	<i>The amount equal to the value of net deferred tax assets not available at the group level</i>
R0180	Other items approved by supervisory authority as basic own funds not specified above
R0190	<i>Non available own funds related to other own funds items approved by supervisory authority</i>
R0200	Minority interests (if not reported as part of a specific own fund item)
R0210	<i>Non-available minority interests at group level</i>

R0220 Own funds from the financial statements that should not be represented by the reconciliation reserve and do not meet the criteria to be classified as Solvency II own funds

R0230 Deductions for participations in other financial undertakings, including non-regulated undertakings carrying out financial activities

R0240	<i>whereof deducted according to art 228 of the Directive 2009/138/EC</i>
R0250	Deductions for participations where there is non-availability of information (Article 229)
R0260	Deduction for participations included by using D&A when a combination of methods is used
R0270	Total of non-available own fund items
R0280	Total deductions

R0290 Total basic own funds after deductions

Ancillary own funds

R0300	Unpaid and uncalled ordinary share capital callable on demand
R0310	Unpaid and uncalled initial funds, members' contributions or the equivalent basic own fund item for mutual and mutual - type undertakings, callable on demand
R0320	Unpaid and uncalled preference shares callable on demand
R0330	A legally binding commitment to subscribe and pay for subordinated liabilities on demand
R0340	Letters of credit and guarantees under Article 96(2) of the Directive 2009/138/EC
R0350	Letters of credit and guarantees other than under Article 96(2) of the Directive 2009/138/EC
R0360	Supplementary members calls under first subparagraph of Article 96(3) of the Directive 2009/138/EC
R0370	Supplementary members calls - other than under first subparagraph of Article 96(3) of the Directive 2009/138/EC
R0380	Non available ancillary own funds at group level
R0390	Other ancillary own funds
R0400	Total ancillary own funds

Own funds of other financial sectors

R0410	Credit Institutions, investment firms, financial institutions, alternative investment fund managers, UCITS management companies
R0420	Institutions for occupational retirement provision
R0430	Non regulated entities carrying out financial activities
R0440	Total own funds of other financial sectors

Total	Tier 1 unrestricted	Tier 1 restricted	Tier 2	Tier 3
C0010	C0020	C0030	C0040	C0050
9,500	9,500		0	
0				
94,876	94,876		0	
0	0		0	
0		0	0	0
0				
0	0			
0		0	0	0
0				
0		0	0	0
0				
18,710	18,710			
0		0	0	0
0				
1				1
0				0
0	0	0	0	0
0				
0				
0				
123,088	123,087	0	0	1
0				
0				
0				
0				
0				
0				
0				
0			0	0
0				
0				
0				
0	0	0	0	0

S.23.01.22

Own Funds

Basic own funds before deduction for participations in other financial sector

Own funds when using the D&A, exclusively or in combination of method 1

R0450 Own funds aggregated when using the D&A and combination of method

R0460 Own funds aggregated when using the D&A and combination of method net of IGT

R0520 Total available own funds to meet the consolidated group SCR (excluding own funds from other financial sector and from the undertakings included via D&A)

R0530 Total available own funds to meet the minimum consolidated group SCR

R0560 Total eligible own funds to meet the consolidated group SCR (excluding own funds from other financial sector and from the undertakings included via D&A)

R0570 Total eligible own funds to meet the minimum consolidated group SCR (group)

R0610 **Minimum consolidated Group SCR**

R0650 **Ratio of Eligible own funds to Minimum Consolidated Group SCR**

R0660 **Total eligible own funds to meet the group SCR (including own funds from other financial sector and from the undertakings included via D&A)**

R0680 **Group SCR**

R0690 **Ratio of Eligible own funds to group SCR including other financial sectors and the undertakings included via D&A**

Reconciliation reserve

R0700 Excess of assets over liabilities

R0710 Own shares (held directly and indirectly)

R0720 Forseeable dividends, distributions and charges

R0730 Other basic own fund items

R0740 Adjustment for restricted own fund items in respect of matching adjustment portfolios and ring fenced funds

R0750 Other non available own funds

R0760 **Reconciliation reserve**

Expected profits

R0770 Expected profits included in future premiums (EPIFP) - Life business

R0780 Expected profits included in future premiums (EPIFP) - Non- life business

R0790 **Total Expected profits included in future premiums (EPIFP)**

Total	Tier 1 unrestricted	Tier 1 restricted	Tier 2	Tier 3
C0010	C0020	C0030	C0040	C0050
0				
0				
123,088	123,087	0	0	1
123,087	123,087	0	0	
123,088	123,087	0	0	1
123,087	123,087	0	0	
24,976				
492.82%				
123,088	123,087	0	0	1
76,308				
161.30%				
C0060				
123,088				
104,377				
18,710				
0				

S.25.01.22

Solvency Capital Requirement - for groups on Standard Formula

R0010	Market risk
R0020	Counterparty default risk
R0030	Life underwriting risk
R0040	Health underwriting risk
R0050	Non-life underwriting risk
R0060	Diversification
R0070	Intangible asset risk
R0100	Basic Solvency Capital Requirement
	Calculation of Solvency Capital Requirement
R0130	Operational risk
R0140	Loss-absorbing capacity of technical provisions
R0150	Loss-absorbing capacity of deferred taxes
R0160	Capital requirement for business operated in accordance with Art. 4 of Directive 2003/41/EC
R0200	Solvency Capital Requirement excluding capital add-on
R0210	Capital add-ons already set
R0220	Solvency capital requirement for undertakings under consolidated method
	Other information on SCR
R0400	Capital requirement for duration-based equity risk sub-module
R0410	Total amount of Notional Solvency Capital Requirements for remaining part
R0420	Total amount of Notional Solvency Capital Requirements for ring fenced funds
R0430	Total amount of Notional Solvency Capital Requirements for matching adjustment portfolios
R0440	Diversification effects due to RFF nSCR aggregation for article 304
R0470	Minimum consolidated group solvency capital requirement
	Information on other entities
R0500	Capital requirement for other financial sectors (Non-insurance capital requirements)
R0510	<i>Credit institutions, investment firms and financial institutions, alternative investment funds managers, UCITS management companies</i>
R0520	<i>Institutions for occupational retirement provisions</i>
R0530	<i>Capital requirement for non-regulated entities carrying out financial activities</i>
R0540	Capital requirement for non-controlled participation requirements
R0550	Capital requirement for residual undertakings
	Overall SCR
R0560	SCR for undertakings included via D&A
R0570	Solvency capital requirement

Gross solvency capital requirement	USP	Simplifications
C0110	C0090	C0120
32,178		
13,881		
0		
12,016		
43,819		
-30,438		
0		
71,455		
C0100		
4,853		
0		
0		
0		
76,308		
0		
76,308		
0		
0		
0		
0		
0		
24,976		
0		
0		
0		
0		
0		
0		
0		
0		
76,308		

USP Key

For life underwriting risk:

- 1 - Increase in the amount of annuity benefits
- 9 - None

For health underwriting risk:

- 1 - Increase in the amount of annuity benefits
- 2 - Standard deviation for NSLT health premium risk
- 3 - Standard deviation for NSLT health gross premium risk
- 4 - Adjustment factor for non-proportional reinsurance
- 5 - Standard deviation for NSLT health reserve risk
- 9 - None

For non-life underwriting risk:

- 4 - Adjustment factor for non-proportional reinsurance
- 6 - Standard deviation for non-life premium risk
- 7 - Standard deviation for non-life gross

S.32.01.22

Undertakings in the scope of the group

	Country	Identification code of the undertaking	Type of code of the ID of the undertaking	Legal Name of the undertaking	Type of undertaking	Legal form	Category (mutual/non mutual)	Supervisory Authority
Row	C0010	C0020	C0030	C0040	C0050	C0060	C0070	C0080
1	LU	222100IUSAKDAYTMX08	LEI	Colonnade Insurance S.A.	Non life insurance undertaking	Limited Company	Non-mutual	Commissariat aux Assurances
2	BM	5299008RMKZGBW8WLB62	LEI	TIG (Bermuda) Limited	Non life insurance undertaking	Limited Company	Non-mutual	Bermuda Monetary Authority

S.32.01.22

Undertakings in the scope of the group

Country	Identification code of the undertaking	Type of code of the ID of the undertaking	Legal Name of the undertaking	Criteria of influence						Inclusion in the scope of Group supervision		Group solvency calculation	
				% capital share	% used for the establishment of consolidated accounts	% voting rights	Other criteria	Level of influence	Proportional share used for group solvency calculation	YES/NO	Date of decision if art. 214 is applied	Method used and under method 1, treatment of the undertaking	
C0010	C0020	C0030	C0040	C0180	C0190	C0200	C0210	C0220	C0230	C0240	C0250	C0260	
1	LU	222100IUSAKDAYTMX08	LEI	Colonnade Insurance S.A.	100.00%	100.00%	100.00%		Dominant	100.00%	Included in the scope		Method 1: Full consolidation
2	BM	5299008RMKZGBW8WLB62	LEI	TIG (Bermuda) Limited	100.00%	100.00%	100.00%		Dominant	100.00%	Included in the scope		Method 1: Full consolidation